

M A S T E R P I E C E S

COUNTRY HOUSE ARCHITECTURE + DESIGN

MICHELLE GALINDO

BRAUN

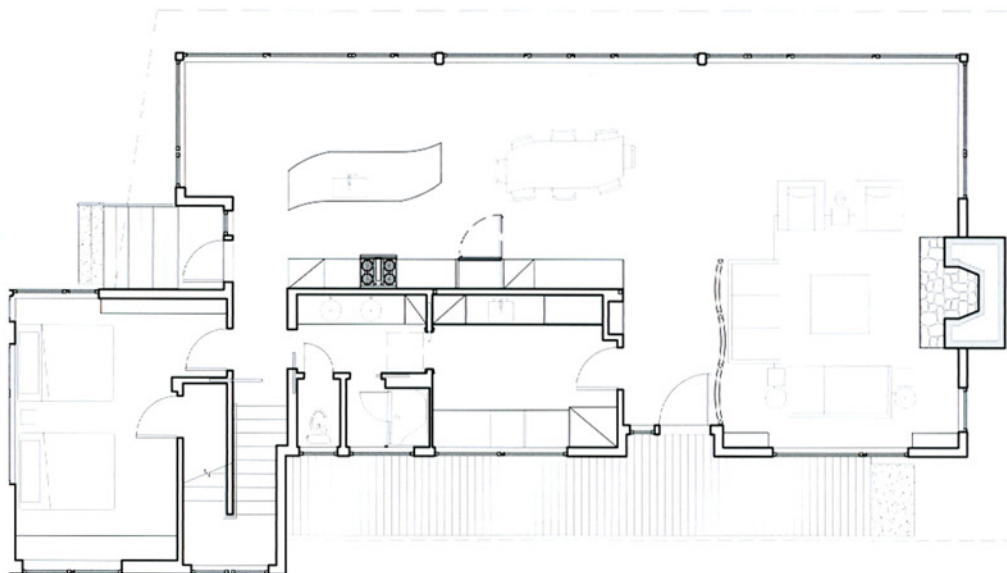




From left to right, from above to below:
Living room with skylights, freestanding bathtub with open views
to surroundings, bathroom.
Right: Interior.

EAGLE HARBOR CABIN,
LAKE SUPERIOR (MI), USA





Left: Cabin cantilevers out towards the water. | Right: Floor plan.

The Eagle Harbor Cabin is located on a wooded waterfront property on Lake Superior, at the northerly edge of Michigan's Upper Peninsula. The 186 square meters cabin cantilevers out toward the water, with a 12 meters long glass wall facing the spectacular beauty of the lake. The cabin is composed of two simple volumes: a large, open living/dining/kitchen

space with an open timber ceiling structure and a 2-story "bedroom tower," with the kids' bedroom on the ground floor and the parents' bedroom stacked above. The cabin has a simple, elemental quality that is enhanced by custom touches such as the curvilinear maple entry screen and the custom furniture pieces.



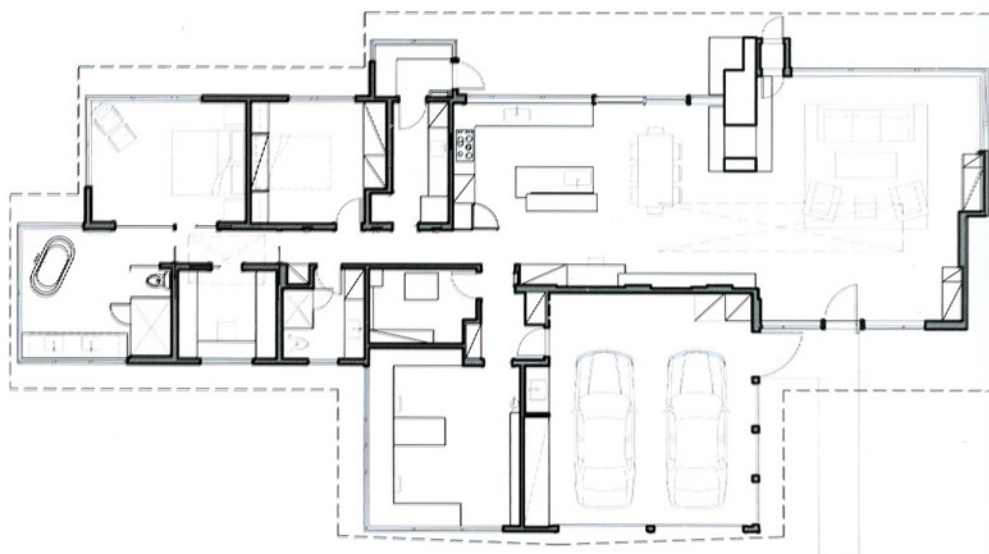




From left to right, from above to below:
View to living room from dining room, dining room with
floor-to-ceiling windows, bedroom.
Right: Wood paneled interior with exposed framing in the ceiling.

LAKE FOREST,
REDMOND, SEATTLE (WA), USA





Left: House appears to be a glass pavilion in the forest. | Right: Floor plan.

A 1950's Northwest contemporary house has been completely renovated while retaining the spirit of the original house. With extensive new windows and glazed roof monitors, the renovated house appears to be a glass pavilion in the forest. The floor plan has been re-organized to create a spacious, light-filled Master Bedroom and Master Bath, with each space

surrounded by glass and views to the forest. The main living and dining spaces have been slightly enlarged, and a new roof monitor with high windows has been added to bring soft natural light to the entire space. The new, enlarged kitchen has counters in quartz and cast-glass, with continuous windows extending directly to the counter level.

